



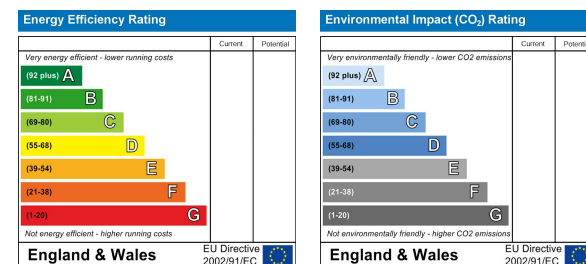
173 Milton Street North, Northampton, NN2 7DD



**Asking Price £290,000**

A very well presented and extended mature three bedroom semi-detached family home situated on a quiet road in the popular residential area of Kingsley. The accommodation comprises, entrance hall, cloakroom, lounge, kitchen/dining/family room. To the first floor are three bedrooms, re-fitted shower room and a attic room currently being used as a bedroom. Outside is a front garden and the rear garden is mainly laid to lawn, enjoys a sunny aspect and a high degree of privacy.

You may download, store and use the material for your own personal use and research. You may not republish, retransmit, redistribute or otherwise make the material available to any party or make the same available on any website, online service or bulletin board of your own or of any other party or make the same available in hard copy or in any other media without the website owner's express prior written consent. The website owner's copyright must remain on all reproductions of material taken from this website.



9 Westleigh Office Park, Northampton, NN3 6BW

T: 01604 230222 F: 01604 232627

www.richardgreener.co.uk

9 Westleigh Office Park, Northampton, NN3 6BW

T: 01604 230222 F: 01604 232627

www.richardgreener.co.uk

# 173 Milton Street North, Northampton, NN2 7DD

## ACCOMMODATION

ENTRANCE HALL

CLOAKROOM

LOUNGE

16'3 x 11'2



KITCHEN/DINING/FAMILY ROOM

16'9 x 15'6



FAMILY ROOM

7'6 x 7'6

FIRST FLOOR LANDING

BEDROOM ONE

13'0 x 8'8



BEDROOM TWO

11'5 x 10'1



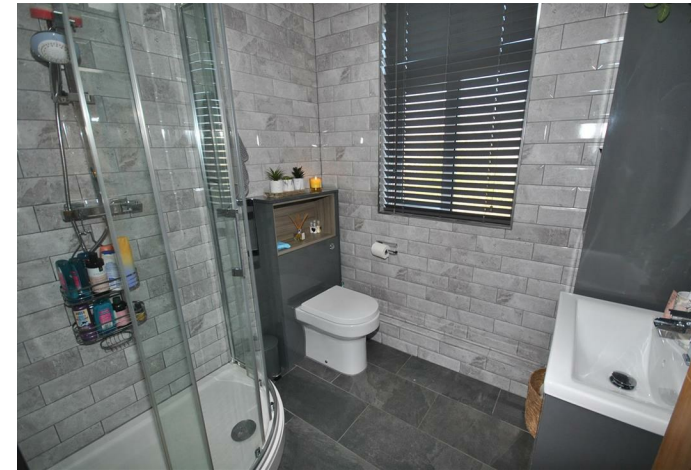
BEDROOM THREE

7'3 x 7'0



SHOWER ROOM

6'9 x 6'2



ATTIC ROOM

11'6 x 11'3



OUTSIDE

FRONT GARDEN

REAR GARDEN

SERVICES

COUNCIL TAX

LOCAL AMENITIES

HOW TO GET THERE

For further information on viewing call 01604 230222